

melvin

1017.01 - 1017.27



colección
wallcovering
03
vinyl

descripción
aspecto de hormigón

composición
**capa vinílica estampada con tintas al agua,
sobre soporte de algodón**

ancho
± 130 cm, ± 51/52 inches

peso
± 350 gr/m², ± 15 oz/yd¹

absorción del ruido
ISO 354, alphaw 0.10

combustión retardada
EN 13501, B s1 d0
ASTM E84, A
NFPA 286



vinyl 
COMMITTED TO
SUSTAINABLE DEVELOPMENT

CE EN 15102

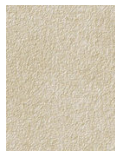


melvin

1017.01 - 1017.27



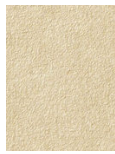
1017.13



1017.06



1017.02



1017.05



1017.08



1017.24



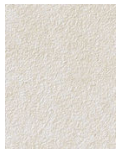
1017.27



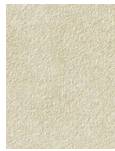
1017.07



1017.04



1017.03



1017.10



1017.16



1017.14



1017.11



1017.19



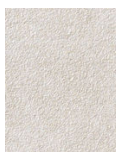
1017.22



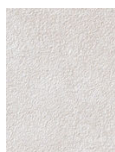
1017.09



1017.25



1017.21



1017.01



1017.20



1017.26



1017.18



1017.17



1017.15



1017.12



1017.23



1017.27