

bolter

1028.01 - 1028.18



colección
wallcovering
01
vinyl

descripción
estructura lisa con efectos combinados a lo largo y a lo ancho

composición
capa vinílica estampada con tintas al agua, sobre soporte de algodón

ancho
± 130 cm, ± 51 inches

peso
± 440 gr/m², ± 18 oz/yd¹

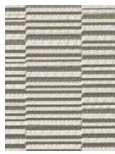
absorción del ruido
ISO 354, alphaw 0.10

combustión retardada
EN 13501, B s2 d0
ASTM E84, A

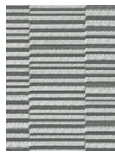


bolter

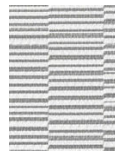
1028.01 - 1028.18



1028.16



1028.07



1028.01



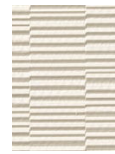
1028.02



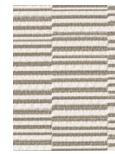
1028.03



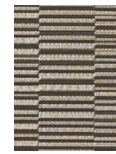
1028.10



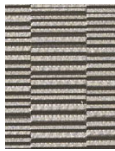
1028.11



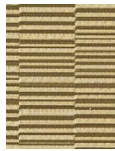
1028.18



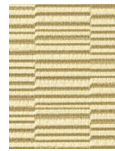
1028.15



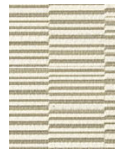
1028.04



1028.08



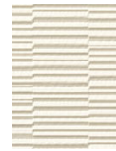
1028.09



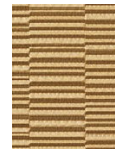
1028.05



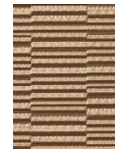
1028.06



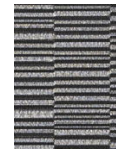
1028.13



1028.14



1028.12



1028.17